

COYLE HIGHLANDS SOUTH ADDITION

LOCATED IN THE SOUTHEAST QUARTER OF THE NORTHEAST QUARTER OF THE SOUTHEAST QUARTER OF SECTION 8, ALL IN TOWNSHIP 7 NORTH, RANGE 11 EAST, VILLAGE OF COTTAGE GROVE, DANE COUNTY, WISCONSIN.

TOTAL PLAT AREA = 2,488,840 SQ. FT. (57,131.3 ACRES)

SCALE: ONE INCH = ONE HUNDRED FEET

SEE SHEET 1 OF 3 FOR PLAT CONTINUATION

SEE SHEET 2 OF 3 FOR PLAT CONTINUATION

NUMBER	CENTRAL ANGLE	CURVE DIRECTION	RADIUS	ARC LENGTH	CHORD	TANGENT BEARING BACK	TANGENT BEARING AHEAD
1	121.111	S	684.615	136.922	235.649	S 70°31'07" E	S 70°31'07" E
2	121.111	S	742.807	146.700	268.19	S 75°52'22" E	S 75°52'22" E
3	121.111	S	719.597	143.748	263.24	S 73°18'45" E	S 73°18'45" E
4	121.111	S	684.615	136.922	235.649	S 70°31'07" E	S 70°31'07" E
5	121.111	S	684.615	136.922	235.649	S 70°31'07" E	S 70°31'07" E
6	121.111	S	684.615	136.922	235.649	S 70°31'07" E	S 70°31'07" E
7	121.111	S	684.615	136.922	235.649	S 70°31'07" E	S 70°31'07" E
8	121.111	S	684.615	136.922	235.649	S 70°31'07" E	S 70°31'07" E
9	121.111	S	684.615	136.922	235.649	S 70°31'07" E	S 70°31'07" E
10	121.111	S	684.615	136.922	235.649	S 70°31'07" E	S 70°31'07" E
11	121.111	S	684.615	136.922	235.649	S 70°31'07" E	S 70°31'07" E
12	121.111	S	684.615	136.922	235.649	S 70°31'07" E	S 70°31'07" E
13	121.111	S	684.615	136.922	235.649	S 70°31'07" E	S 70°31'07" E
14	121.111	S	684.615	136.922	235.649	S 70°31'07" E	S 70°31'07" E
15	121.111	S	684.615	136.922	235.649	S 70°31'07" E	S 70°31'07" E
16	121.111	S	684.615	136.922	235.649	S 70°31'07" E	S 70°31'07" E
17	121.111	S	684.615	136.922	235.649	S 70°31'07" E	S 70°31'07" E
18	121.111	S	684.615	136.922	235.649	S 70°31'07" E	S 70°31'07" E
19	121.111	S	684.615	136.922	235.649	S 70°31'07" E	S 70°31'07" E
20	121.111	S	684.615	136.922	235.649	S 70°31'07" E	S 70°31'07" E
21	121.111	S	684.615	136.922	235.649	S 70°31'07" E	S 70°31'07" E
22	121.111	S	684.615	136.922	235.649	S 70°31'07" E	S 70°31'07" E
23	121.111	S	684.615	136.922	235.649	S 70°31'07" E	S 70°31'07" E
24	121.111	S	684.615	136.922	235.649	S 70°31'07" E	S 70°31'07" E
25	121.111	S	684.615	136.922	235.649	S 70°31'07" E	S 70°31'07" E
26	121.111	S	684.615	136.922	235.649	S 70°31'07" E	S 70°31'07" E
27	121.111	S	684.615	136.922	235.649	S 70°31'07" E	S 70°31'07" E

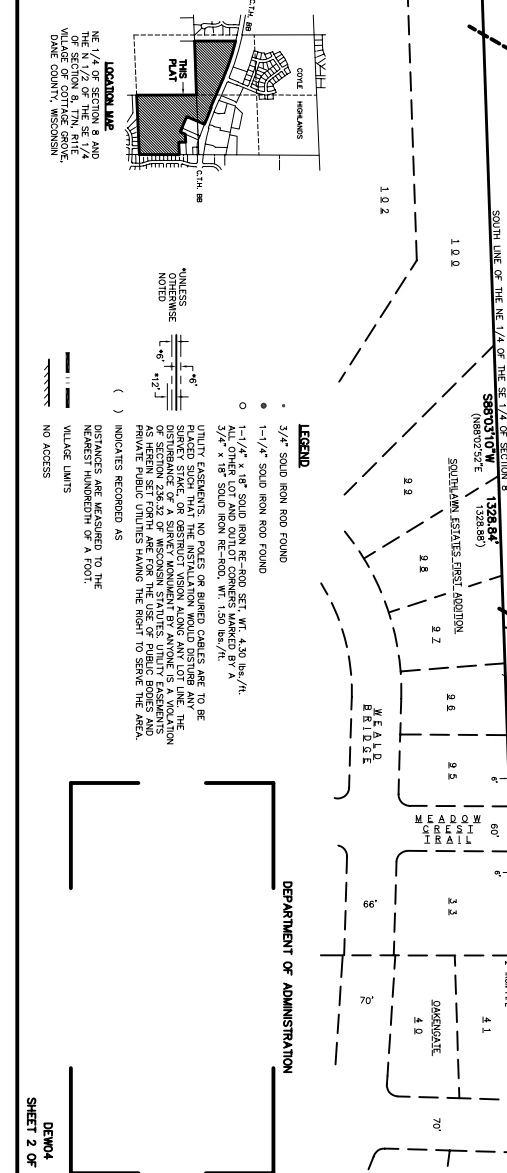
LOT	SQUARE FEET	LOT	SQUARE FEET
1	121.111	28	134.607
2	134.607	29	134.607
3	134.607	30	134.607
4	134.607	31	134.607
5	134.607	32	134.607
6	134.607	33	134.607
7	134.607	34	134.607
8	134.607	35	134.607
9	134.607	36	134.607
10	134.607	37	134.607
11	134.607	38	134.607
12	134.607	39	134.607
13	134.607	40	134.607
14	134.607	41	134.607
15	134.607	42	134.607
16	134.607	43	134.607
17	134.607	44	134.607
18	134.607	45	134.607
19	134.607	46	134.607
20	134.607	47	134.607
21	134.607	48	134.607
22	134.607	49	134.607
23	134.607	50	134.607
24	134.607	51	134.607
25	134.607	52	134.607
26	134.607	53	134.607
27	134.607	54	134.607



BEARINGS REFERENCED TO THE EAST LINE OF THE NE 1/4 OF SECTION 8, RECORDED AS N00°20'40"E.

BRADT FARMS, INC. ("THE FARM" GOLF COURSE)

LANDS



WEST LINE OF THE NE 1/4 OF THE SE 1/4 OF SECTION 8
 SOUTH LINE OF THE NE 1/4 OF THE SE 1/4 OF SECTION 8
 EAST LINE OF THE SE 1/4 OF SECTION 8

BRADT FARMS, INC. ("THE FARM" GOLF COURSE)

LANDS

LANDS

LANDS

LANDS

LANDS

LANDS

LANDS

LANDS

DEPARTMENT OF ADMINISTRATION

DEPT. OF LAND & WATER

SHEET 2 OF 3